

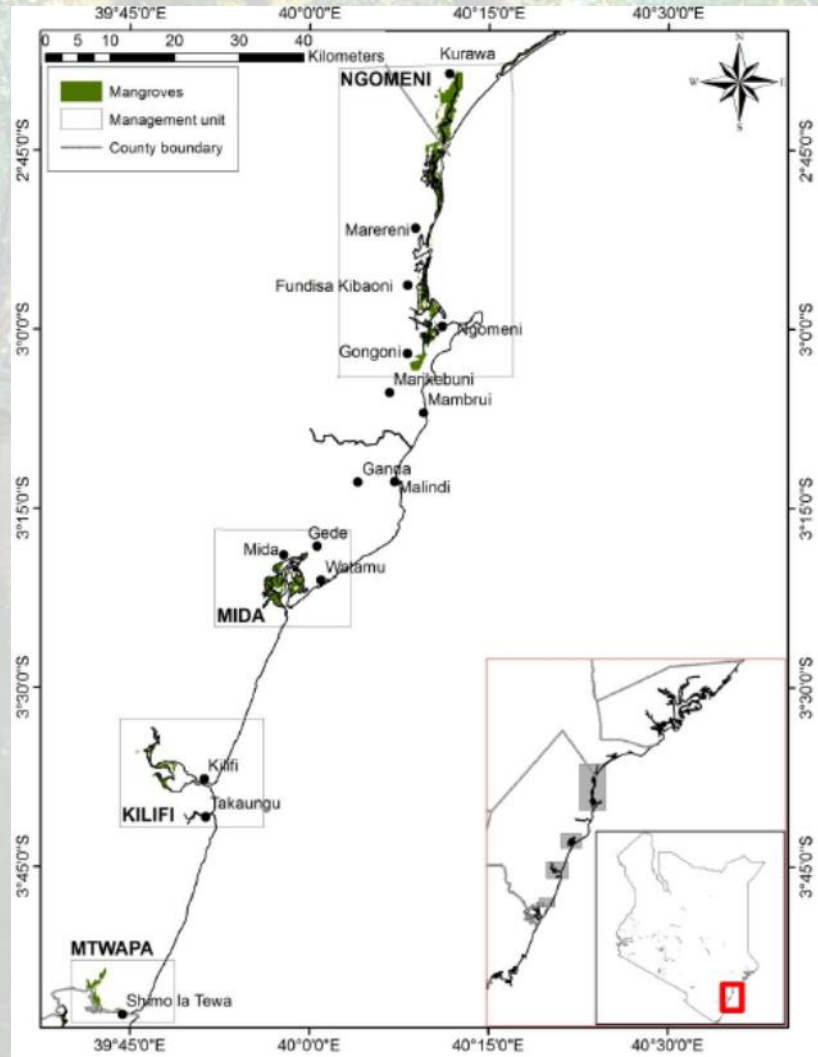


“Community-based EbA – Opportunities and Challenges in Mangrove Restoration Projects”

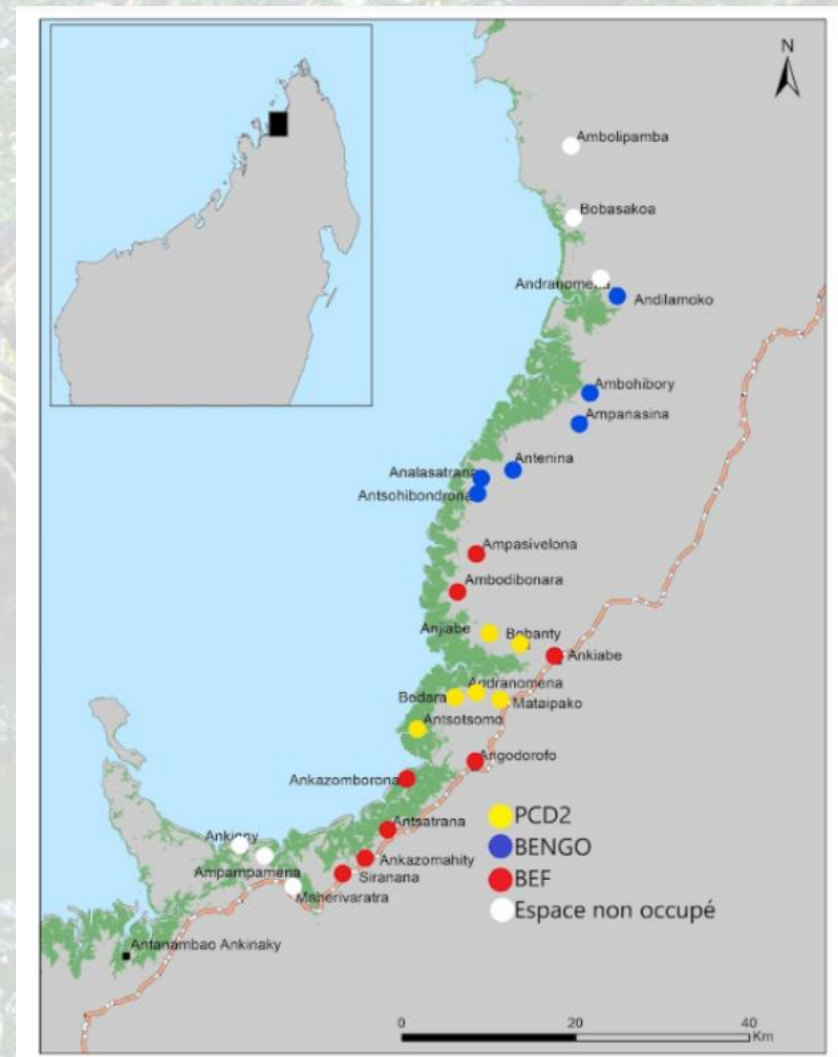
Rolf-Dieter Sprung, WWF Germany

WWF Mangrove Project Sites

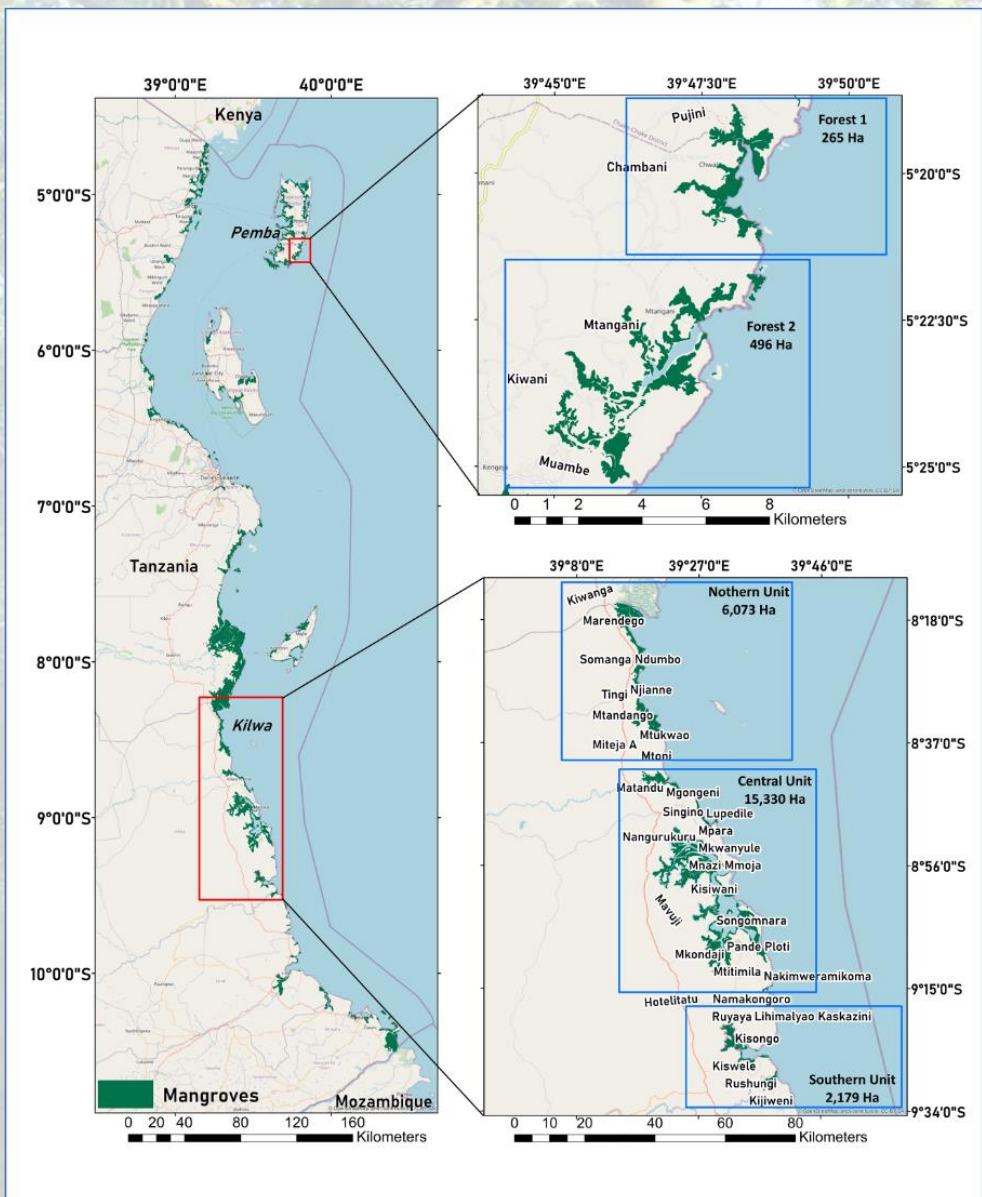
Kenya



Madagascar



Tanzania



Pakistan



General Project Components:

1. Mangrove restoration and management
2. Strengthening of community-based governance and management capacities
3. Livelihood support for local communities (e.g. Nature-based Solutions)
4. Policy advocacy and international cooperation (e.g. Regional Mangrove Action Plan)
5. Knowledge management and communication on best practices

Mangrove Restoration and Management

Opportunities:

- Good mangrove restoration (planting) efforts according to plan and high community interest in mangrove nurseries and afforestation, especially among women
- Pre-assessment of degraded areas and sub-division of mangrove areas into blocks with similar ecological and hydrological conditions
- Participatory 5-year management plans in all areas
- Community-based monitoring and patrolling to assess restoration success and reduce illegal use
- Livelihood support also favors mangrove conservation (e.g. beekeeping, eco-tourism)

Challenges:

- Strong focus on mangrove nurseries and planting, less on other restoration methods
- Sustainable financing of mangrove management and monitoring
- Low capacity of communities to assess site conditions before deciding on restoration method
- No law enforcement powers of community scouts, limited capacity to stop illegal use
- Supportive livelihood support (beekeeping, eco-tourism, etc.) still at low scale with low impact

Community-Based Organizations (CBOs) and Governance

Opportunities:

- High interest of communities to work on mangrove projects, especially in areas prone to cyclones and flooding
- Dedicated CBOs at local level with high proportion of women as committee members and/or leaders of user groups
- In Tanzania and Kenya very good cooperation with Government Authorities such as forestry and fishery services
- Good vertical governance and management structure of Community Forest Associations in Kenya

Challenges:

- Limited capacity to control resource use by external users, infrastructure or industrial development (e.g. salt mining, agro-industries, coastal fisheries, port development etc.)
- Capacity development needs (conflict resolution, management planning, monitoring, adaptive management)
- Low capacity of Government Authorities in terms of resources and personnel
- High number of CBOs can lead to fragmentation of management areas and responsibilities

Regional Mangrove Action Plan (10 Partner Countries)

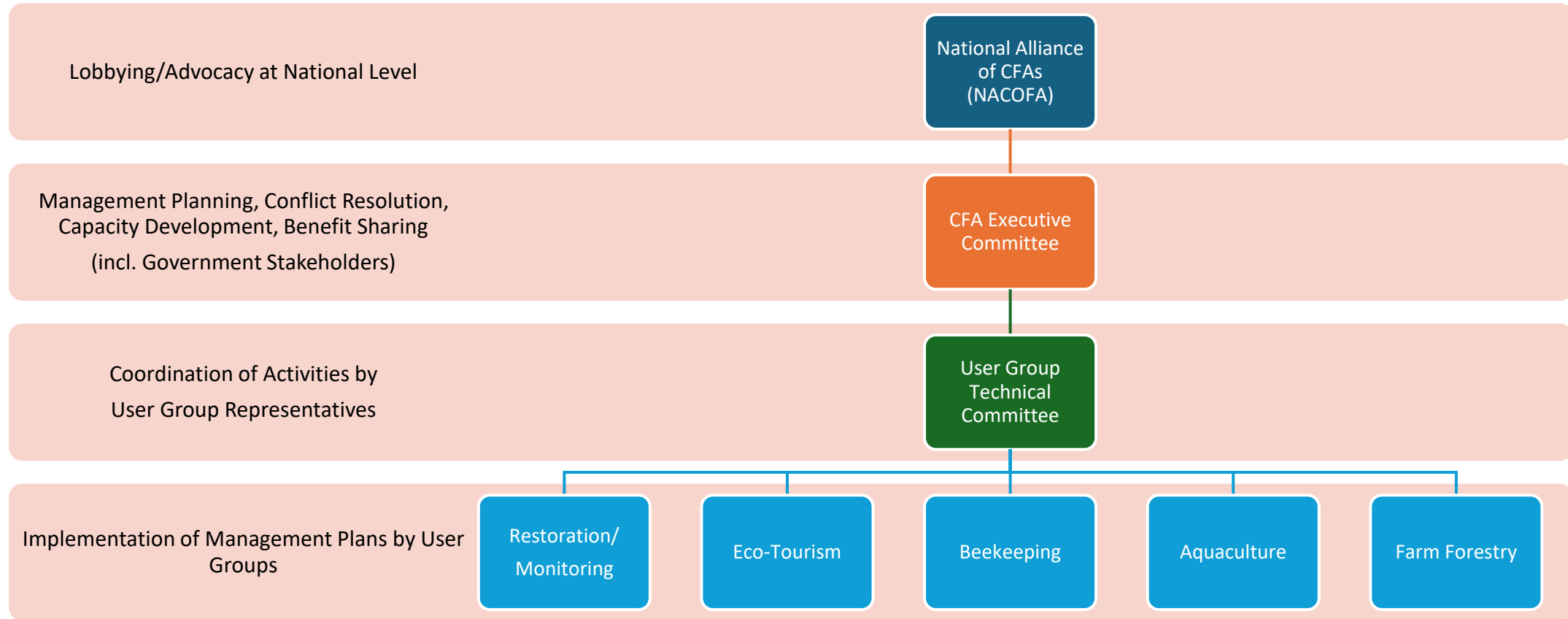
Vision.

A healthy and resilient mangrove ecosystem in the WIO region by 2050 for the benefit of people and nature.

Strategic Objectives:

1. To develop, strengthen and align evidence-based policy and implementation of national management tools, regional & international commitments related to mangrove ecosystems
2. To identify natural, human, and climatic induced impacts on mangrove ecosystems within the WIO Region
3. To enhance effective restoration and rehabilitation of degraded mangrove ecosystems
4. To establish and facilitate standardised and innovative assessment of mangrove ecosystems and establish reporting procedures across the WIO Region
5. To promote sustainable community livelihoods that alleviate pressure on the mangrove ecosystem
6. To enhance public awareness about the socio-ecological and economic values of mangrove ecosystems
7. To mobilise and secure financial resources to support the implementation of the action plan, incorporating equitable and transparent principles.

Community Forest Association Management Structure (Example: Mkatimau CFA Kenya)



Mangrove nurseries and planted areas



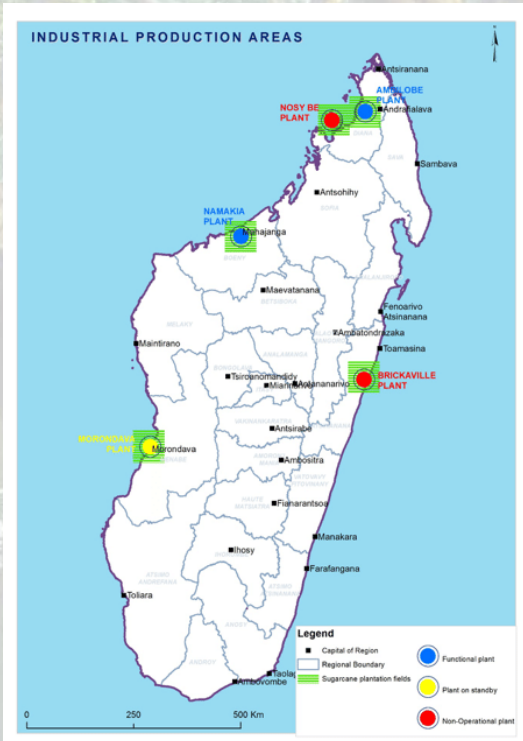
Mangrove Board Walks and Community Camp Site in Kilifi, Kenya



Industrial Salt Mining in Marereni, Kenya



Sugar Cane Factory, Madagascar



A photograph of a mangrove forest. The scene is dominated by the complex, gnarled roots of mangrove trees that extend into a calm body of water. The water's surface is still, creating a clear reflection of the trees and their roots above. The overall color palette is a mix of earthy browns, greys, and muted greens, with a soft, slightly hazy atmosphere. The text "Thank You!" is centered in the middle of the image in a black, cursive font.

Thank You!